

**YOUR VISION
DESERVES THE BEST**

HEXL



MEET YOUR VERSATILE NEW BACKHOE LOADER.
DESIGNED TO DELIVER MORE OF WHAT MATTERS TO YOU.

HEXL 420_x SuperBackhoe

TRANSFORMING VISIONS INTO REALITY



420

ENGINE

Brand, Model	Cummins/4BT3.9-C100
Number of cylinders	4
Max. Power	102 HP (75 Kw) @2400 rpm
Max. Torque	330 Nm @1500 rpm
Displacement	3.9L
Bore & Stroke	ø 102 x 120 mm
Emission Class	Stage II/Stage III
High power and torque output, water cooled turbocharged diesel engine.	

AXLES

Front drive axle WZZD75	
• Adopting advanced overseas technologies on engineering machinery axle	
• Adopting cast-steel axle housing with great load capacity and adequate rigidity	
• Adopting centrally positioned transmission shaft and swing-type central swing shaft.	
• The inner structure includes central reducer, transmission differential, end planetary reducer, etc.	
• Centrally positioned steering cylinder able to realize convenient and flexible steering	
• Adopting independent oil circuit, full hydraulic steering with steering angle at 50°	
Rear drive axle ZL30	
• Two-stage decelerating structure for drive axle	
• Spiral bevel gears with great bearing capacity and high efficiency for main drive	
• The wheel is planetary decelerating structure	
• The main reducer is equipped with common bevel-gear differential mechanism, simple structure and flexible differential	
• Cast steel with adequate rigidity serves as material for the axle housing	
• Clamp-disc brake with high braking torque	

DRIVING SPEED

1st gear	6 km/h
2nd gear	12 km/h
3rd gear	22 km/h
4th gear	40km/h

TRANSMISSION

• torque-converter
• Electrically controlled 2 Wheel drive or 4 Wheel Drive selection
• 4 forward, 4 reverse gears
• Transmission oil cooler

CAB&HOOD

- Widened visual angle
- Ergonomic & Aesthetic Interior Design
- High capacity A/C system
- Improved ventilating with 16 air nozzles
- 8" LCD display on rear side console
- Pool type floor mats
- Mechanical lever control
- Multi purpose bucket with proposal control
- Adjustable steering wheel
- Loader boom lock
- Storage boxes
- Interior led lights
- Radio with bluetooth
- Emergency stop funtion
- Touchscreen Entertainment
- 360 Degree Camera

HYDRAULIC SYSTEM

Simple, reliable and efficient duplex pump

Main pump flow	120L/min @2200 rpm
Pressure	20 Mpa
Auxiliary pump flow	10L/min @2200 rpm

TIRES

Front	14-17.5
Rear	19.5-24

FILLING CAPACITIES

Engine oil pump	7L
Engine cooling system	20L
Fuel Tank	125 L
Hydraulic oil tank	125 L
Transmission oil	35 L

OPERATING WEIGHT

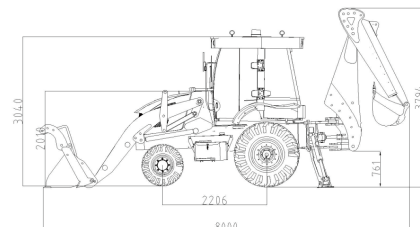
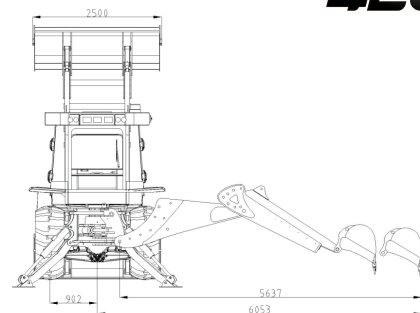
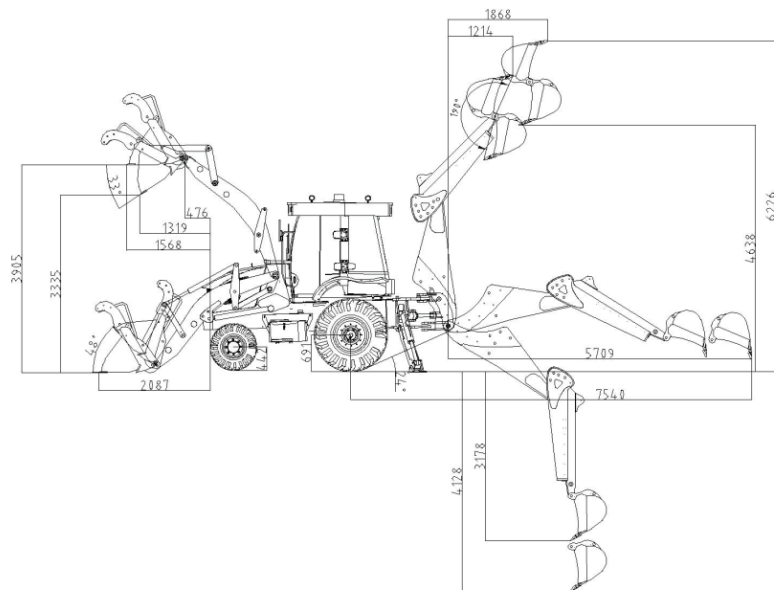
Operating weight with standard equipment 8600 kg

Operational weight, complying with the ISO 6016 standards, includes full fuel tank, hydraulic system and other liquids, 75 kg operator weight and standard equipped machine weight. Optional equipments are not included.

BUILT TO PERFECTION



420x



ALL DIMENSIONS IN MM.

LOADER PERFORMANCE

6 in 1 bucket capacity	1.2m ³
Max. bucket breakout force	47KN
Max. loading arm breakout force	47KN
Lifting capacity to max. height	2500KG

BACKHOE PERFORMANCE

	Standard arm	Telescopic arm extended	Telescopic arm retracted
Bucket capacity	0.3m ³	0.3m ³	0.3m ³
Max. bucket breakout force	45KN	45KN	45KN
Max. arm breakout force	57.9KN	36.4KN	51.3KN

ADVANTAGES AND CHARACTERISTICS



Omnipotent
working condition



Quick change system



security system



Strong power



Excellent Hydraulic



Flexible mobility



Sturdy structure



Accurate control

MULTIPLE ATTACHMENTS

